



Players Patter 208 - Feb 2024

www.haslemereplayers.com

Treasurer's Report

So what is new in Haslemere Players finance land? Well, not the Treasurer for a start! You still have me in spite of my standing down at the last AGM, so, if there are any budding Treasurers or Treasurer Assistants out there then please get in touch!

Shows to Date:

To date this year, things are looking pretty good. Showstoppers managed to break even and Calendar Girls made a record surplus with its strong audience numbers and relatively low-cost production.

Shows to Go:

Our next and final show of this financial year is Footloose. The more tickets sold the better the result will be. So PLEASE, PLEASE, PLEASE don't miss out and buy your tickets NOW!!! The Footloose team and cast are working exceptionally hard to put on a good show and we ALL must do our best to support them.

Fundraising & Social Activity to Date:

You will be aware that we are pushing very hard to raise funds for the building work that has to take place at the Studio. We are calling it Project Studio 25. The Committee have formed two subcommittees for Social and Fundraising and together they are doing a fabulous job. We have raised over £4,000 from these two areas alone, with our most financially successful (and very enjoyable) event being the Barn dance that was held at Grayshott Village Hall just a few weeks ago. We have also driven up funds through the Christmas party, BBQ, fetes, Calendar sales and sponsorship, member donations, Robyn's Bodyshop party, PayPal fundraising, Last Night of the Proms and the Tea Party. All of these activities take a lot of effort and coordination and on behalf of all who attended them, I would like to thank all involved.

Fundraising to Go:

The fundraising team are very busy organising other events for you all to take part in. We had originally estimated that costs for the work at the Studio would cost in or around £25,000, but with inflation such as it is, that amount could increase. So we are still looking for at least another £20,000 to reach our target. For that, we are relying on your patronage and your generosity. If you can make a GiftAid donation before April 5th you will be able to claim tax relief in this financial year.

Mike Byrne (mb.hp.treasurer@gmail.com)

Chairman's Report

Well, Spring hasn't quite sprung but with **Footloose** fast approaching, it's definitely just around the corner. Believe me when I tell you, you are in for a treat! The show is really coming together, ready to hit the stage from 19-23 March so if you haven't booked your tickets, get that ticked off your to do list right now!

We're also looking for volunteers for ushering and raffle so please let me know if you're able to help. This involves being at the hall 45 minutes prior to each performance and being responsible for welcoming audience members, ensuring their safety and actively selling programmes.

We held successful auditions for **Little Shop of Horrors** on 11 February and have a fantastic cast ready to jump straight in to rehearsals as soon as Footloose is over with the show just 9 weeks later from 6-8 June. More from director, Andy Boughton about the show elsewhere in the newsletter.

We're also excited to bring you **The Addams Family** as our final show of 2024, directed by Kim Seymour. In contrast to Little Shop this is a big company show with some really fun musical numbers for both principals and chorus as well as some great costumes. The show will be a week later than our usual October slot, running from 29 October to 2 November so that it falls into half term. We're also hoping to do an additional matinee to make the most of the appeal the show has for younger audiences.

Not content with this fabulous line up for 2024, we've also recently announced our 2025 show selection of **Kiss Me Kate**, **Company** and **Into The Woods** where we welcome two new (to Players) directors, Sally Waghorn and Nikki Plowman and we're also delighted to welcome back the dynamic duo, Hughie O'Donnell and Jess McCluskey (who very excitingly will be Mr & Mrs O'Donnell by then) for In To The Woods.

Our social team of Mary-Lou, Zac, Thomas and Ingrid, led by Verity, have also brought us two great social events since the last newsletter, the Christmas Party on 14 December, with open mic and Christmas nibbles and the hugely popular (sold out!!) Barn Dance on 10 February. Well done to everyone involved in that it was a huge team effort and really hard work but raised over £1,000 for Project Studio 25. The band were great and we've already asked them if we can book them for around the same time next year. We have more social events coming up (more from Verity on that) but if you have ideas for social events please let us know social@haslemereplayers.com.

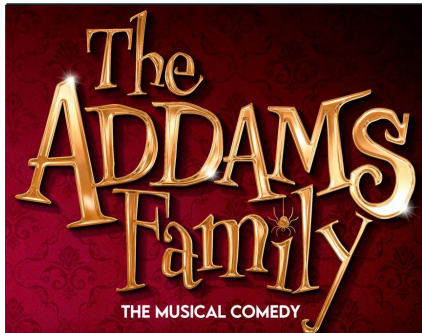
Chairman's Report (Continued)

We also have more coming on the fundraising horizon with a 24 hour Danceathon on Saturday 6 April at the Haslemere Hub. Led by Lizzie Hales, with some guest instructors, we'll have a huge range of dance style aerobics classes on offer for both adults and children along with a variety of other activities. The Hub will have their cafe open throughout the day so come along and have a coffee (and maybe a cake!) and then bring along your tipples of choice for the evening 'freestyle' session and dance through the night!

Don't forget, you can donate direct to Project Studio 25 using [Go Fund Me](#). A huge thank you to those who have already generously donated; we can't tell you how much we appreciate it.

Vicki Gavin

chairman@haslemereplayers.com



Autumn is coming, which means pumpkins, spiced lattes, black cats and... the Addams Family (Tuesday 29th Oct - 2nd Nov 2024). The dynamic duo that is Kim Seymour and Lizzie Hales are all set

to put us through our paces to bring this spook-tacular musical to life - torture devices and all! If you don't know the show, don't worry. All your favourite kooky characters are there; including:- Gomez, Morticia, Wednesday, Pugsley, Lurch, Uncle Fester and Grandma.

The plot is simple... Wednesday Addams, the ultimate princess of darkness, has grown up and has a shocking secret that only Gomez knows; she's fallen in love with a sweet, smart young man from a respectable family! Now, Gomez Addams must do something he's never done before — keep a secret from his beloved wife, Morticia. Everything will change for the whole family on the fateful night they host a dinner for Wednesday's 'normal' boyfriend and his parents.

The whole story is supported by the Addam Family's ancestors, raised from dead, who make up the ensemble. We anticipate needing roughly 12-16 ancestors. So, there will be a workshop-style auditions for those roles.

More details to follow but keys dates for your diary...

Presentation evening - Thursday 13 June, 8pm

Optional auditions rehearsals - Tuesday 18
and Thursday 20 June

Principals Auditions - Sunday 23 June

Ensemble audition workshop - Tuesday 25 June

Full cast read though - Thursday 27 June, 8 pm

Little Shop of Horrors

Now that auditions, for the show are complete, the hard work begins. As a director or MD of a stage production auditions are the least enjoyable aspect in the process of staging. It is often difficult to decide who to cast and who to disappoint, especially when more than one person has clearly demonstrated their ability to play a part well. These auditions were an extreme case of this when every part could have been cast two or three times over. However, the fair and democratic process of majority voting was fully employed following considerable debate by the casting panel.



I would like to thank all of you who auditioned and prepared so thoroughly to deliver such high standards and make selection so difficult.

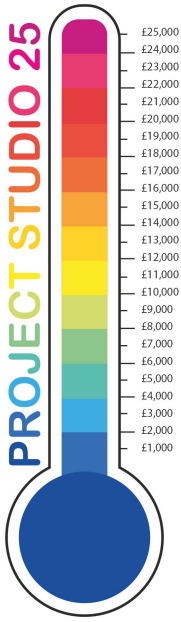
Little Shop presents a challenge to everyone involved. We have only two months rehearsal time and half the number of rehearsals normally allocated to a full musical. There will be few comfort zones for the cast in terms of learning script, music and choreographed moves. It is a full-on, high energy iconic show, when many in the audiences will know the show well and come to see it with high expectations! The show has 18 cracking musical numbers and more deaths than an Agatha Christie play!

I have already started planning for; the set, costumes, properties, sound, lighting, special effects and directing each scene! Lizzie is preparing on-line music materials and Mandy is working on choreographed moves in preparation for the start of rehearsals immediately after *Footloose*! As a 'must see' production with performances 6-8 June; please put it in your diary.

Andy.

FUNDRAISING - PROJECT STUDIO 25

PROJECT STUDIO 25



As Vicki has mentioned, this is a date not be missed. Word is spreading about our 24 hour fundraising Danceathon on 6 April at The Hub.

Kicking off at 0730, led by our very own Lizzie (with guest appearances leading sessions from Kim Seymour, Kylie Jones (ex-Strictly), Jess McCluskey, Georgie da Silva and Street Nation), and plenty more besides, this is your "Chance to Dance".

No experience necessary, the time is NOW, to Dance like no-one is watching. There really is something for everyone of all ages and abilities from tinies to seniors, age is no limit. I am even encouraging my 92-year-old mother in law to join us - possibly for some chair dancing or hand jiving! Activities also include a kids "party style" session in the afternoon and an Adults party in the

evening. Freestyle session during the small hours for the night owls among you.

Spectators also welcome for a small admission charge.

This event is not just for Players, please tell everyone - friends, family, colleagues, neighbours, school teachers, classmates.

Is fancy dress your thing? (Not obligatory). The sky's the limit. Spot prizes will be awarded for best outfits. Contact Mary-Lou and hire something special, perhaps your favourite show dance outfit?!

Refreshments will be available for purchase throughout.

Keep checking in for more info soon on how to sign up - tickets will be per session or an "unlimited" participation ticket also available. Tickets will be available on the door, but we recommend purchasing admission prior to the day to avoid disappointment.

VOLUNTEERS needed: Please contact Jo, Jane, Debbie or Robyn if you are available to help on the day/night.

If you're already busy on this date, please consider supporting our fundraising efforts by donating directly through the Go Fund Me link on our website. Thank you.

Our very own Players Lottery - The 100 Club is in the pipeline, due to be launched soon.

COMING UP..... Inter-Society Quiz Night hosted by David Greenwood - date TBC August/September.

Would you like to join us on the Fundraising committee? We'd love to hear from you. The more the merrier.

Thanks everyone for your support.

Jo, Jane, Debbie and Robyn

Footloose the Musical

At the time of writing, we are exactly 5 weeks from opening night and everything is coming together beautifully, the songs are sounding fabulous, the dances are being practiced, the lifts (yes that's right the lifts) are being finalised and the costumes (fresh from the 80s) are being washed, pressed and are nearly ready to go!

We now have a full cast of 32 people of which 13 are new members to our society, although I expect you will recognise some of them from other shows across the local area. It is great to have welcomed such a wealth of new talent to the cast.

We are delighted to have Georgie Da Silva back with us as choreographer after her previous debut with us in Anything Goes, ably assisted by Lucy Egan, Verity Foster and Becca McGregor as her trustee assistants!

Now all we need is an audience. That's where you come in. Please order your tickets now on the link below:

<https://tickets.haslemerehall.co.uk/sales/genres/theatre/footloose>

Groups of 10 or more get a group discount so it is worth getting your friends along.

Here is a little photo of a few of the cast this weekend at the barn dance!



2025 Show Announcement

Kiss Me Kate, 25th – 29th March 2025

Company, 5th – 7th June 2025

Into the Woods, 21st – 25th October 2025

Kiss Me Kate kicks off the year with this joyful company show. The ultimate battle of the sexes takes centre stage (literally) as former spouses Lilli Vanessi and Fred Graham feud on stage and off during a musical presentation of *The Taming of the Shrew*. A similar feud is going on with their younger co-stars Lois and Bill, and on top of that two gangsters are wandering backstage trying to collect a debt. What could possibly go wrong?!

We're delighted that Sally Waghorn will be taking the Director reins, with Justin Luke leading the Musical Direction, and Mandy Boughton putting us through our paces with her choreography. With lots of supporting and ensemble roles to aid in the high jinks, a bit of Shakespeare, and a Cole Porter score including 'Another Opening, Another Show', 'So in Love', 'Brush up your Shakespeare' and 'Too Darn Hot'; this comedy classic is sure to be lots of fun.

Company

Following on from the change to the June show with *Little Shop of Horrors* in 2024, we're excited to announce that *Company* will take this slot in 2025. This George Firth and Stephen Sondheim musical meets confirmed bachelor Bobby, his friends and girlfriend(s) on his 35th birthday and follows their need to see him married and 'settled down'. Through a series of hilarious interactions over dinners, drinks and a wedding, Bobby contemplates the pros and cons of his unmarried status. Written for 14 people, this challenging musical takes a sophisticated and honest look at modern, adult relationships through a brilliant, energetic score and very vivid, real characters.

Although no stranger to directing, we welcome Nikki Plowman in her Directorial debut for the Players. Nikki will be very ably assisted by Lizzie Hales as Musical Director.

Into the Woods

October 2025 brings another new title for the Players. Described as a rare modern classic, *Into the Woods* follows a Baker and his wife, who wish to have a child; Cinderella who wishes to attend the King's festival; and Jack, who wishes his cow would give milk. When the Baker and his Wife learn they cannot have a child because of a Witch's curse, the two set off on a journey to break the curse. Everyone's wish is granted, but the consequences of their actions return to haunt them with disastrous results.

Into the Woods has 18 named roles and ensemble, and is an enchanting and touching story about parent-child relationships. Leading us on this fantastical journey, we welcome back Jamie O'Donnell and Jessi McCluskey who will co-direct and choreograph, with Lizzie Hales taking on her second Sondheim of the year as Musical Director.



GRAPEVINE NEWS OF MEMBERS

Elizabeth Chester wants everyone to know that she has moved to Weymouth to be near her family. Her email and mobile phone number will remain the same.

We have to report the sad news that Trevor Ricketts has died and his funeral is this coming Friday down at Porchester Crematorium at 1.45 p.m. All are welcome.

Fay Foster remembers that Trev was everything a leading man should be – tall, blonde, good-looking and a brilliant actor and singer to boot. He played Sid Sorokin in *The Pajama Game* in 1983 and followed it up with another six wonderful performances in *The Desert Song* (Pierre/Red Shadow), *Carousel* (Billy Bigelow), *Fagin* (Oliver), *Robert Browning* (Robert and Elizabeth), *Curly* (Oklahoma) and, in 1994, *Dexter Haven* (High Society). He was also joined by his wife, Gill, in several shows and daughter, Beverley, once. He was a regular on the Farnham stage as well as directing some of their productions.



Trev with Teresa Marsh in
High Society

Trev and Gill left the area to go to France where they opened a sports centre for holiday makers and he also often entertained the clients in the evenings. In 2015 they returned to the UK and have been living in Lee-on-Solent since.

Our sympathy goes out to Gill, Bev and son Richard in their sad loss.

Dates for your Diary



- | | |
|--------------|---|
| 19 - 23 Mar | Footloose Show Week |
| 6 April | 24 hour Danceaon at the Haslemere Hub |
| 27, 28 April | beaty & the Beast by Surrey Theatre Academy |
| 16 - 18 May | the King's Speech by Haslemere Thespians |
| 22 - 25 May | 9 - 5 by Grayshott Stagers |
| 6 - 8 June | Little Shop of Horrors |
| 13 June | Presentation evening for The Adams Family |
| 23 June | Principal auditions |
| 25 June | Ensemble audition workshop |